

OMNI GEAR®

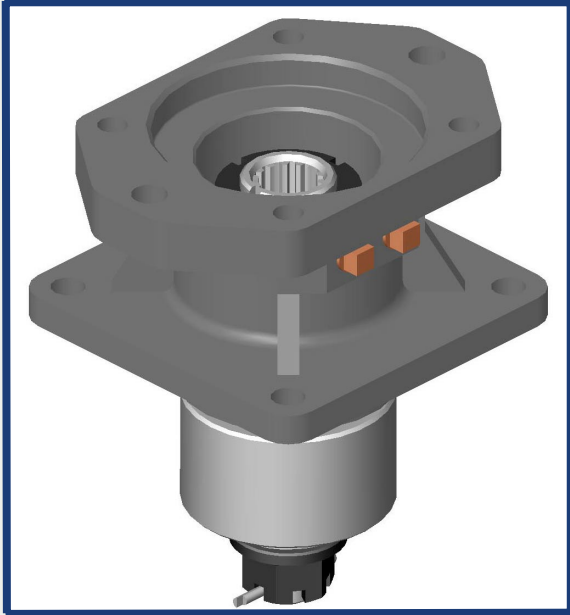
**Engineered Bearing
Housings**

Creating Value for our Customers

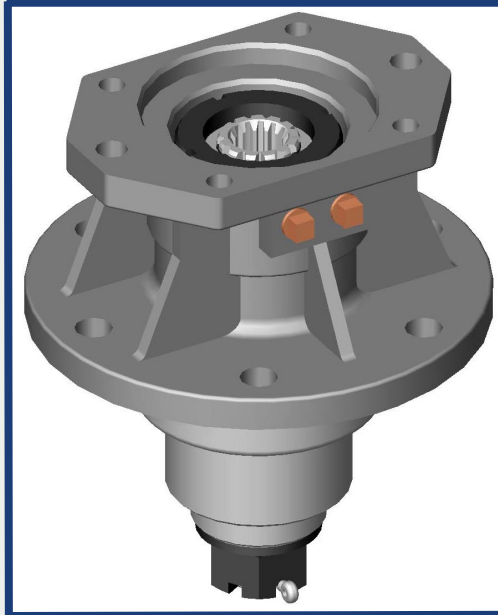
www.OmniGear.com

Omni Gear builds bearing housings for a wide variety of machines and applications with shaft speeds up to 4000 rpm and radial load capacities up to 10 tons. Inputs can be for hydraulic motor, electric motor, metric and inch, or shaft input shaft output.

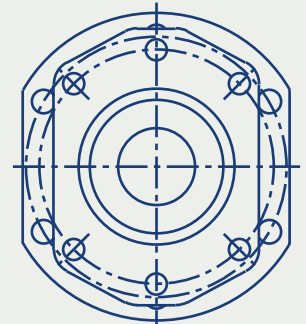
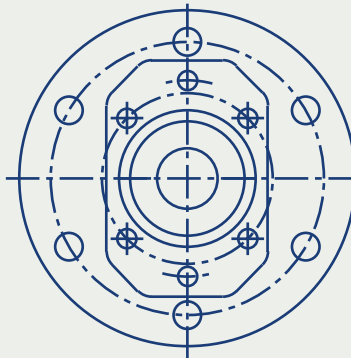
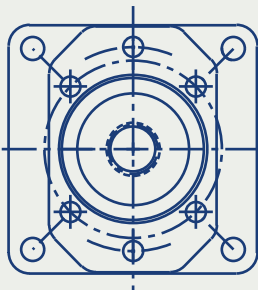
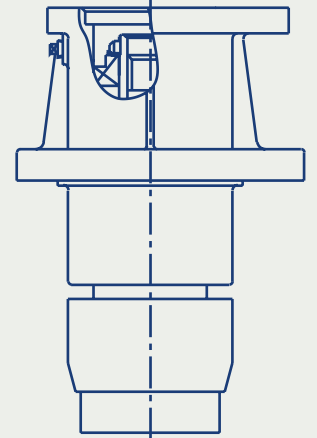
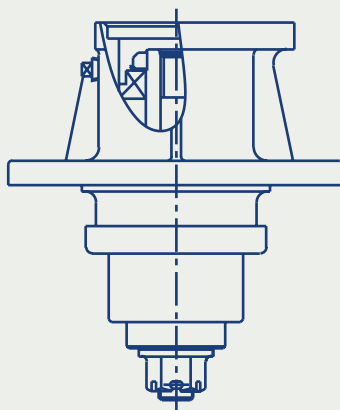
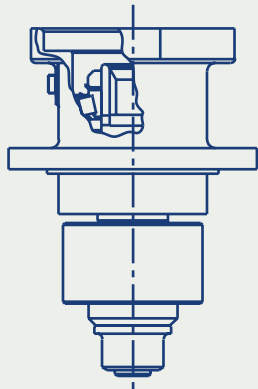
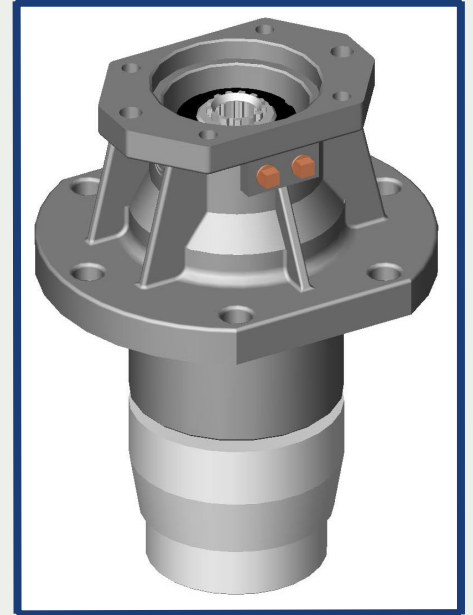
MDH-40



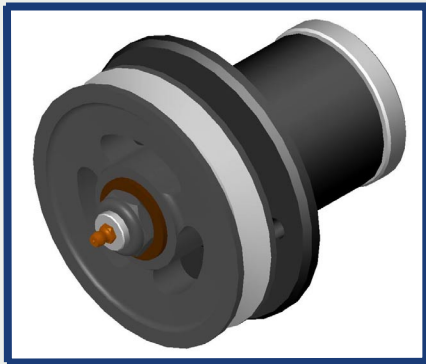
MDH-65



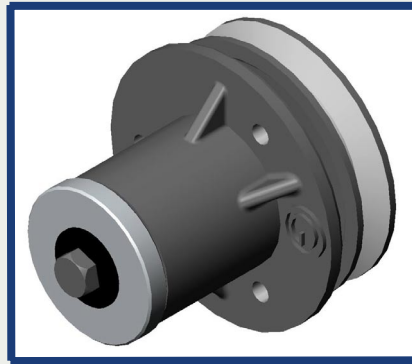
MDH-100



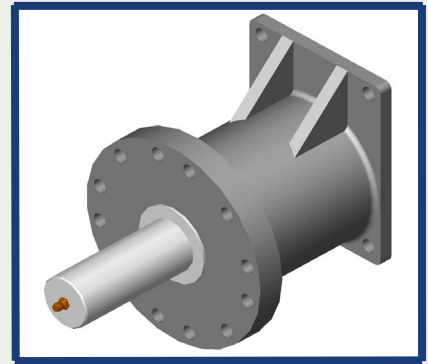
MD-20 Tapered



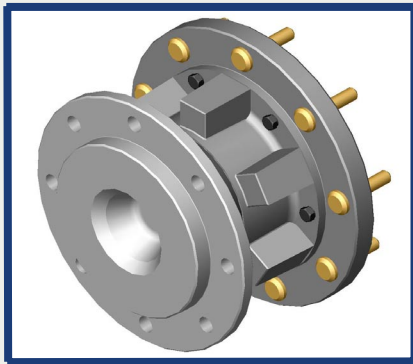
MD-20 Ball



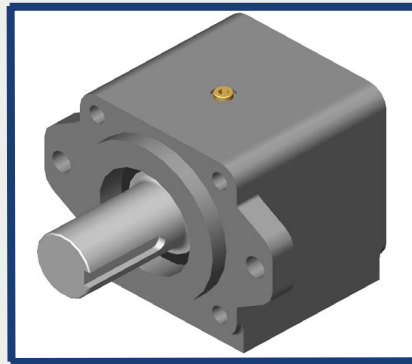
MD-35 Group 3



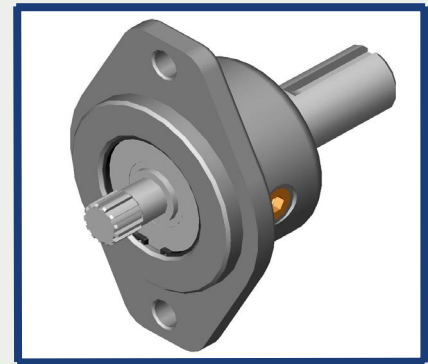
WN-06



MDH-45



SAE to Shaft



SAE to NEMA



SN-06



Omni Gear offers a variety of engineered bearing housings to suit your application. For additional dimensional and engineering data please contact Omni Gear.



Housing
Grey iron and ductile iron are standard.

Mounting Holes
Options include metric and inch size tapped holes. Custom bolt hole patterns available.

Bearing Locknut
ISO class external bearing locknut system standard.

Input Options
Input shafts, electric motor and hydraulic motor flanges available.

Coatings
Painted black with standard primer and top coat. Other coatings are available.

Bearings
ISO tapered roller bearings standard.

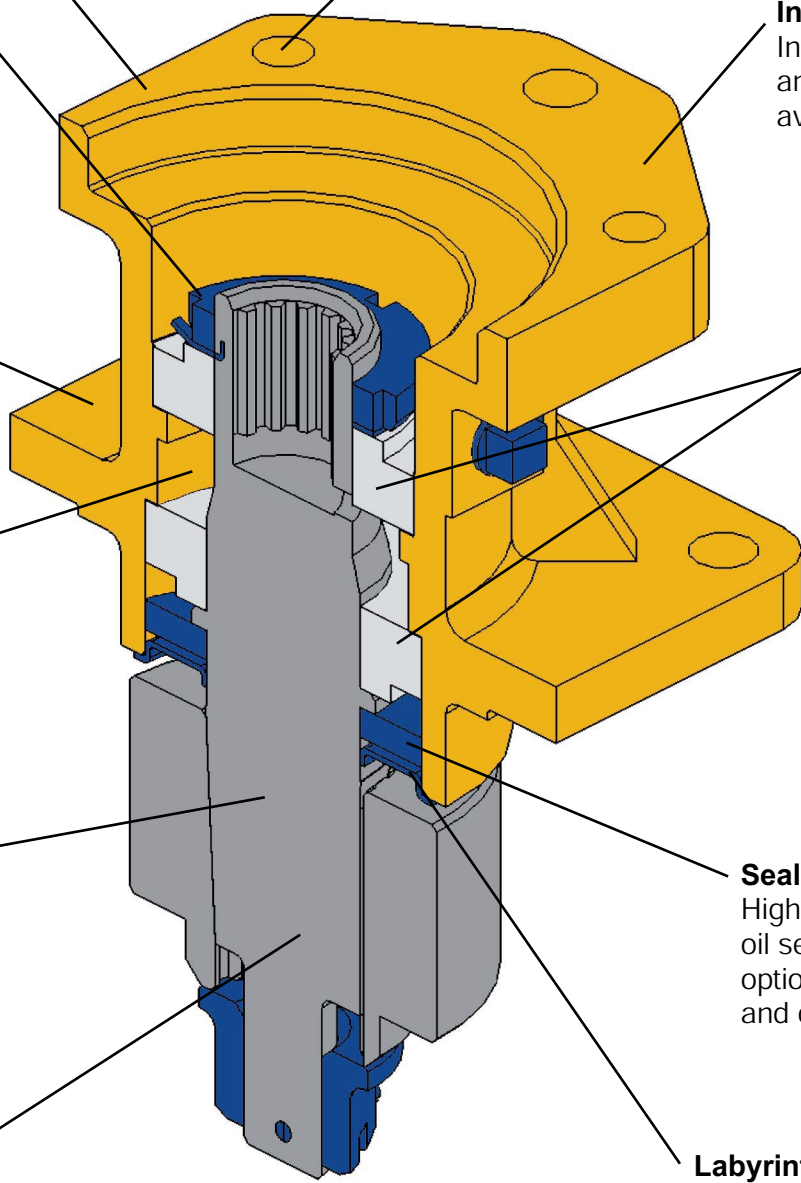
Lubrication
Units can be filled with mineral or synthetic oils/greases according to application requirements.

Shafts
Carburized alloy steel shafts standard.

Seals
High quality double-lip oil seals standard. Other options include Viton seals and cartridge type seals.

Outputs
Outputs include tapered spline with bushings, straight keyed, and other custom shaft lengths.

Labyrinths
Output seal labyrinths available for extra seal protection.



OMNI GEAR®



E-mail: Sales@OmniGear.com Web: www.OmniGear.com

©2005 Omni Gear®, All rights reserved