

OMNI GEAR®

Planetary Gear Drives

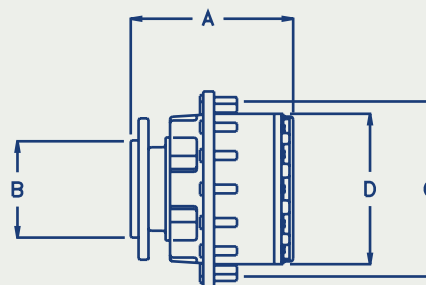
Creating Value for our Customers  
[www.OmniGear.com](http://www.OmniGear.com)

# Performance Data

Model	Maximum Intermittent Output Torque*		Maximum Radial Load Capacity		Maximum Input Speed rpm	Ratios
	lb-in	Nm	lb	kg		
<b>Wheel Drives</b>						
WS02	15,000	1,695	7,000	3,182	4,000	4.60:1
WD02	15,000	1,695	7,000	3,182	4,000	11.96 to 12.97:1
WD03	30,000	3,390	7,000	3,182	4,000	18.25 to 68.00:1
WS06	25,000	2,825	10,000	4,545	3,500	2.75 to 4.81:1
WD06	50,000	5,650	10,000	4,545	5,000	13.06 to 32.76:1
WS12	60,000	6,780	16,000	7,273	3,500	3.43 to 6.07:1
WD12	100,000	11,300	16,000	7,273	5,000	18.67 to 49.01:1
<b>Shaft Output Drives</b>						
SS02	15,000	1,695	7,000	3,182	4,000	3.60:1
SD02	15,000	1,695	7,000	3,182	4,000	10.96 to 12.97:1
SS06	25,000	2,825	10,000	4,545	3,500	3.75 to 5.81:1
SD06	50,000	5,650	10,000	4,545	5,000	14.06 to 33.76:1
SS12	60,000	6,780	16,000	7,273	3,500	4.43 to 7.07:1
SD12	100,000	11,300	16,000	7,273	5,000	19.67 to 50.01:1
<b>Flange Output Drives</b>						
SS02	15,000	1,695	7,000	3,182	4,000	3.60:1
SD02	15,000	1,695	7,000	3,182	4,000	10.96 to 12.97:1
SS06	25,000	2,825	10,000	4,545	3,500	3.75 to 5.81:1
SD06	50,000	5,650	10,000	4,545	5,000	14.06 to 33.76:1
SS12	60,000	6,780	16,000	7,273	3,500	4.43 to 7.07:1
SD12	100,000	11,300	16,000	7,273	5,000	19.67 to 50.01:1

\* Contact Omni Gear or refer to Omni Gear's main Planetary catalog for various ratings for your application.

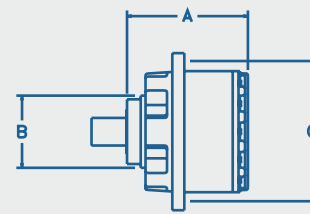
# Physical Dimensions



## Wheel Drives

Model	Maximum Weight of Unit		Rim Pilot Diameter D		Mtg. Pilot Diameter B		B.C. Diameter C		Overall Length A	
	lb	kg	in	mm	in	mm	in	mm	in	mm
WD02	65	30	6.0	152	7.00	177.8	8.00	203.20	8.2	208
WD03A	90	41	7.9	200	5.25	133.4	9.50	241.30	10.2	260
WD03B	90	41	7.9	200	7.00	177.8	9.50	241.30	10.2	260
WS06A1	85	39	7.9	200	6.88	174.6	9.50	241.30	10.6	269
WS06A2	85	39	7.9	200	5.25	133.4	9.50	241.30	10.6	269
WS06B1	85	39	7.9	200	6.88	174.6	9.50	241.30	10.6	269
WS06B2	85	39	7.9	200	7.00	177.8	9.50	241.30	10.6	269
WD06A1	100	45	7.9	200	6.88	174.6	9.50	241.30	12.1	307
WD06A2	100	45	7.9	200	5.25	133.4	9.50	241.30	12.1	307
WD06B1	100	45	7.9	200	6.88	174.6	9.50	241.30	12.1	307
WD06B2	100	45	7.9	200	7.00	177.8	9.50	241.30	12.1	307
WS12BH1	156	71	10.6	270	6.88	174.6	12.38	314.33	10.5	267
WS12CH3	156	71	11.0	280	7.65	194.2	13.19	334.95	10.5	267
WD12BH1	210	96	10.6	270	6.88	174.6	12.38	314.33	12.4	315
WD12CH3	210	96	11.0	280	7.65	194.2	13.19	334.95	12.4	315

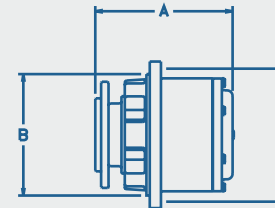
# Physical Dimensions



## Shaft Output Drives

Model	Maximum Weight of Unit		Overall Length A		Pilot Mtg. Diameter B		B.C. Diameter C	
	lb	kg	in	mm	in	mm	in	mm
SS02	65	30	6.1	156	5.00	127.0	5.00	127.0
SS06AB	85	39	8.1	206	8.00	203.2	9.50	241.3
SS06AC	85	39	9.8	248	8.00	203.2	9.50	241.3
SD06AB	100	45	9.6	244	8.00	203.2	9.50	241.3
SD06C	100	45	11.3	286	8.00	203.2	9.50	241.3
SS12H1A	156	71	10.6	270	11.26	286.0	12.38	314.3
SS12H1B	156	71	8.7	220	11.26	286.0	12.38	314.3
SS12H1C	156	71	10.6	268	11.26	286.0	12.38	314.3
SS12H3A	156	71	10.6	270	11.02	279.9	13.19	335.0
SS12H3B	156	71	8.6	219	11.02	279.9	13.19	335.0
SS12H3C	156	71	10.6	268	11.02	279.9	13.19	335.0
SD12H1A	210	96	12.5	318	11.26	286.0	12.38	314.3
SD12H1B	210	96	10.5	268	11.26	286.0	12.38	314.3
SD12H1C	210	96	12.5	316	11.26	286.0	12.38	314.3
SD12H3A	210	96	12.5	318	11.02	279.9	13.19	335.0
SD12H3B	210	96	10.5	267	11.02	279.9	13.19	335.0
SD12H3C	210	96	12.4	316	11.02	279.9	13.19	335.0

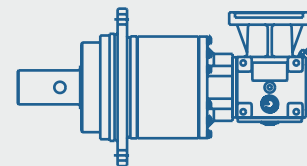
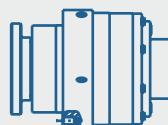
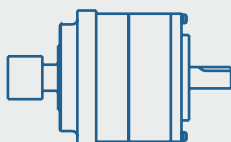
Custom shafts, oil ports and housing flanges available. Contact Omni Gear for details.



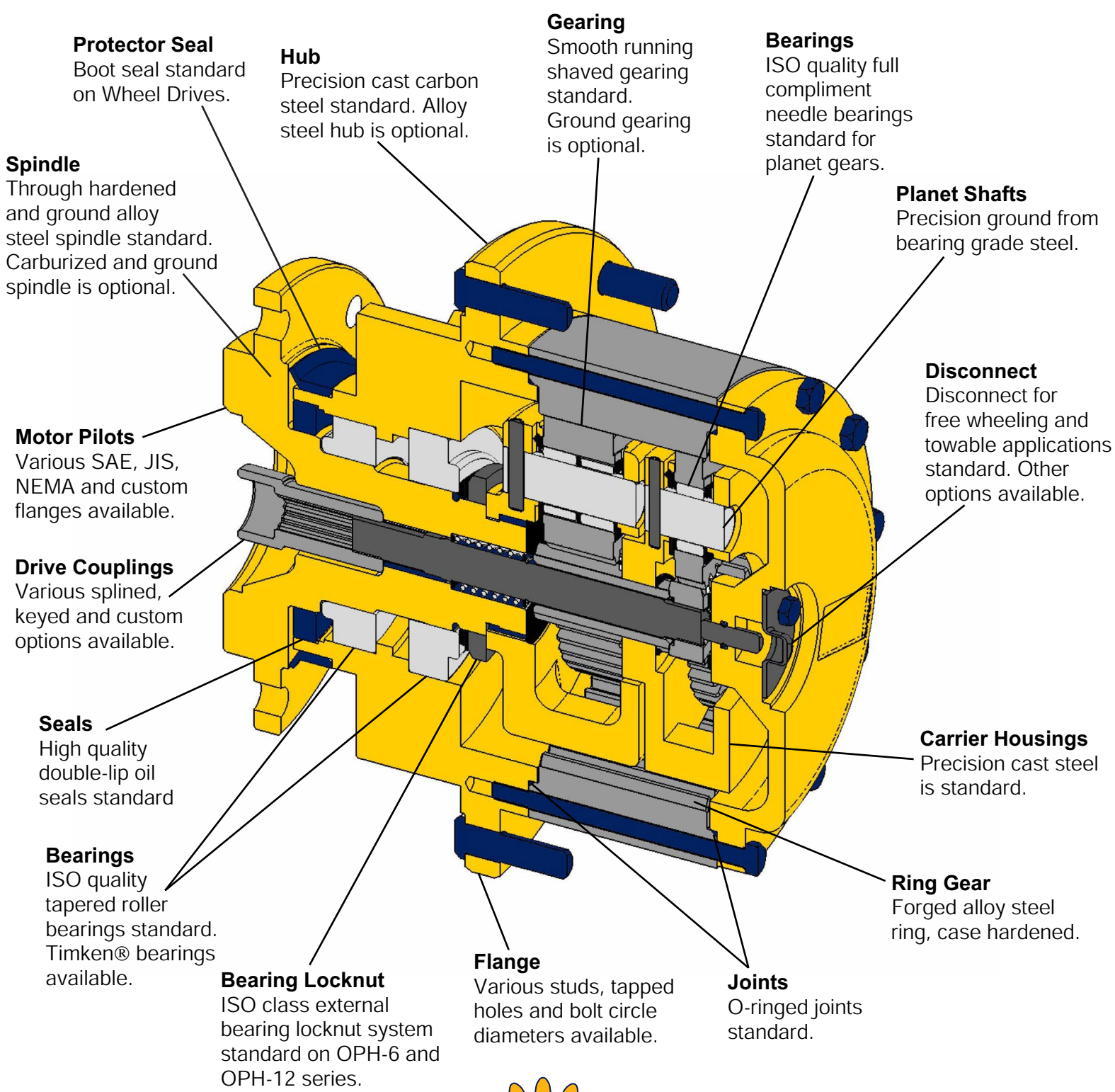
## Flange Output Drives

Model	Maximum Weight of Unit		Overall Length A		Pilot Mtg. Diameter B		B.C. Diameter C	
	lb	kg	in	mm	in	mm	in	mm
SS02	65	30	6.9	176	5.00	127.0	5.00	127.0
SS06AB	85	39	10.8	274	8.00	203.2	9.50	241.3
SS06AC	85	39	12.4	316	8.00	203.2	9.50	241.3
SD06AB	100	45	10.8	274	8.00	203.2	9.50	241.3
SD06C	100	45	12.4	316	8.00	203.2	9.50	241.3
SS12H1A	156	71	11.5	292	11.26	286.0	12.38	314.3
SS12H1B	156	71	9.5	241	11.26	286.0	12.38	314.3
SS12H1C	156	71	11.4	290	11.26	286.0	12.38	314.3
SS12H3A	156	71	11.5	291	11.02	279.9	13.19	335.0
SS12H3B	156	71	9.5	241	11.02	279.9	13.19	335.0
SS12H3C	156	71	11.4	289	11.02	279.9	13.19	335.0
SD12H1A	210	96	13.4	340	11.26	286.0	12.38	314.3
SD12H1B	210	96	11.4	289	11.26	286.0	12.38	314.3
SD12H1C	210	96	13.3	338	11.26	286.0	12.38	314.3
SD12H3A	210	96	13.4	339	11.02	279.9	13.19	335.0
SD12H3B	210	96	11.4	289	11.02	279.9	13.19	335.0
SD12H3C	210	96	13.3	337	11.02	279.9	13.19	335.0

Custom flanges, oil ports and housing flanges available. Contact Omni Gear for details.



Custom Planetary assemblies also available: Shaft Input, Right Angle Input, Low Backlash Swing Drives; Please contact Omni Gear for your application requirements.



**OMNI GEAR®**



E-mail: [Sales@OmniGear.com](mailto:Sales@OmniGear.com) Web: [www.OmniGear.com](http://www.OmniGear.com)

©2003 Omni Gear®, All rights reserved