



OMNI GEAR®

Right Angle Gear Drives

Creating Value for our Customers
www.OmniGear.com

Model Selection

Feature	Description	Code	Sample
Gear Ratio	6:5 Reducing	65	G3056
	1:1	11	
	5:6 Increasing	56	
Down Thrust	Standard	S	G3056H
	Heavy	H	
HP Rating	40	40	G3056H80
	60	60	
	80	80	
	100	100	
Clutch Sizes*	1"	B0	G3056H80B7
	1 3/16"	B3	
	1 1/4"	B4	
	1 7/16"	B7	
	1 1/2"	B8	
Gear Ratio	3:2 Reducing	32	G5056
	4:3 Reducing	43	
	5:4 Reducing	54	
	6:5 Reducing	65	
	11:10 Reducing	10	
	1:1	11	
	10:11 Increasing	01	
	5:6 Increasing	56	
	4:5 Increasing	45	
	3:4 Increasing	34	
2:3 Increasing	23		
Down Thrust	Standard	S	G5056H
	Heavy	H	
HP Rating	60	60	G5056H80
	80	80	
	100	100	
	125	125	
	150	150	
Clutch Sizes*	1"	B0	G5056H80B7
	1 3/16"	B3	
	1 1/4"	B4	
	1 7/16"	B7	
	1 1/2"	B8	
Gear Ratio	3:2 Reducing	32	G10056
	4:3 Reducing	43	
	5:4 Reducing	54	
	6:5 Reducing	65	
	11:10 Reducing	10	
	1:1	11	
	10:11 Increasing	01	
	5:6 Increasing	56	
	4:5 Increasing	45	
	3:4 Increasing	34	
2:3 Increasing	23		
Down Thrust	Standard	S	G10056H
	Heavy	H	
HP Rating	150	150	G10056H200
	200	200	
	250	250	
Clutch Sizes*	1 1/2"	B8	G10056H200B11
	1 11/16"	B11	
	1 15/16"	B15	

G-30 GEAR CASE

HP Rating	Vertical Shaft RPM	HP	Standard Down Thrust	Heavy Down Thrust
40	1160	30	4600	6900
	1460	36	4240	6360
	1760	40	4000	6000
	2200	44	3720	5580
60	1160	44	5175	7475
	1460	53	4770	6890
	1760	60	4500	6500
	2200	67	4185	6045
80	1160	59	5750	8050
	1460	71	5300	7420
	1760	80	5000	7000
	2200	89	4650	6510
100	1160	74	8625	
	1460	89	7950	N/A
	1760	100	7500	
	2200	111	6975	
60	1160	44	6900	9200
	1460	53	6360	8480
	1760	60	6000	8000
	2200	67	5580	7440
80	1160	59	8050	10350
	1460	71	7420	9540
	1760	80	7000	9000
	2200	89	6510	8370
100	1160	74	9775	11500
	1460	89	9010	10600
	1760	100	8500	10000
	2200	111	7905	9300
125	1160	93	10350	12650
	1460	111	9540	11660
	1760	125	9000	11000
	2200	139	8370	10230
150	1160	111	10350	11500
	1460	134	9450	10600
	1760	150	8000	10000
	2200	167	8370	12090
150	1160	111	9200	11500
	1460	134	8480	10600
	1760	150	8000	10000
	2200	167	8370	12090
200	1160	148	11500	14950
	1460	178	10600	13780
	1760	200	10000	13000
	2200	223	9300	12200
250	1160	185	13800	18400
	1460	223	12720	16960
	1760	250	11000	14000
	2200	283	10000	12800
300	1160	222	18400	23000
	1460	267	16960	21200
	1760	300	16000	20000

G-50 GEAR CASE

G-100 GEAR CASE

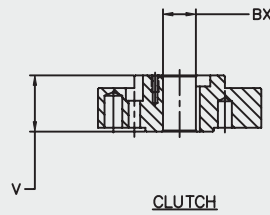
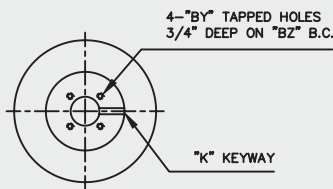
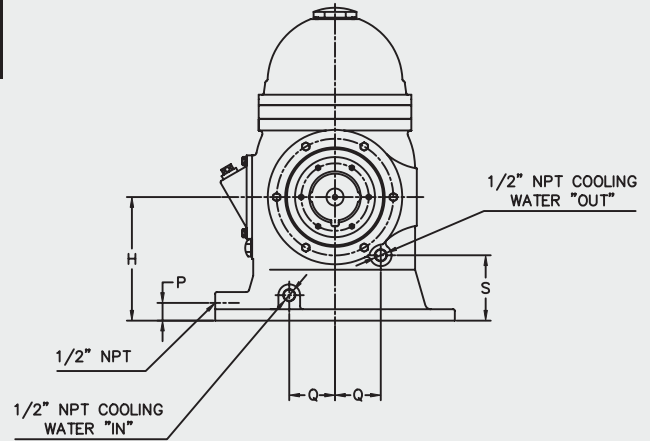
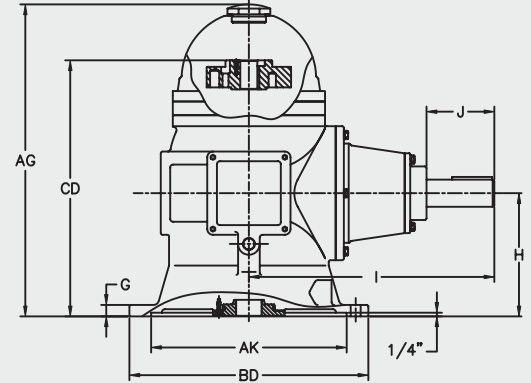
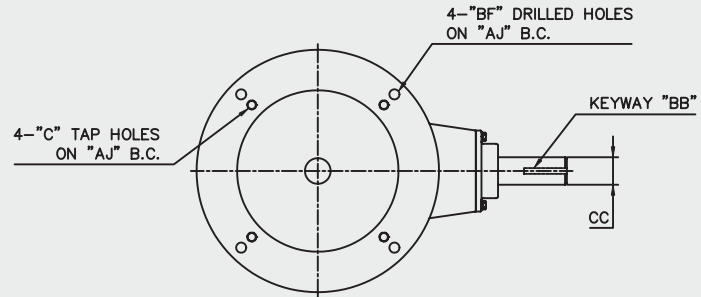


Power: Different conditions for various applications may result in a higher or lower capacity.
 Oil Seals: Single, double and triple lip Nitrile as well as Viton seals available.
 Bearings: Geardrives available with various bearing life options.
 Lubrication: Drives available with various lubes depending on operating characteristics.

* Other clutch sizes available as special order

Dimensions of Standard Gear Drive

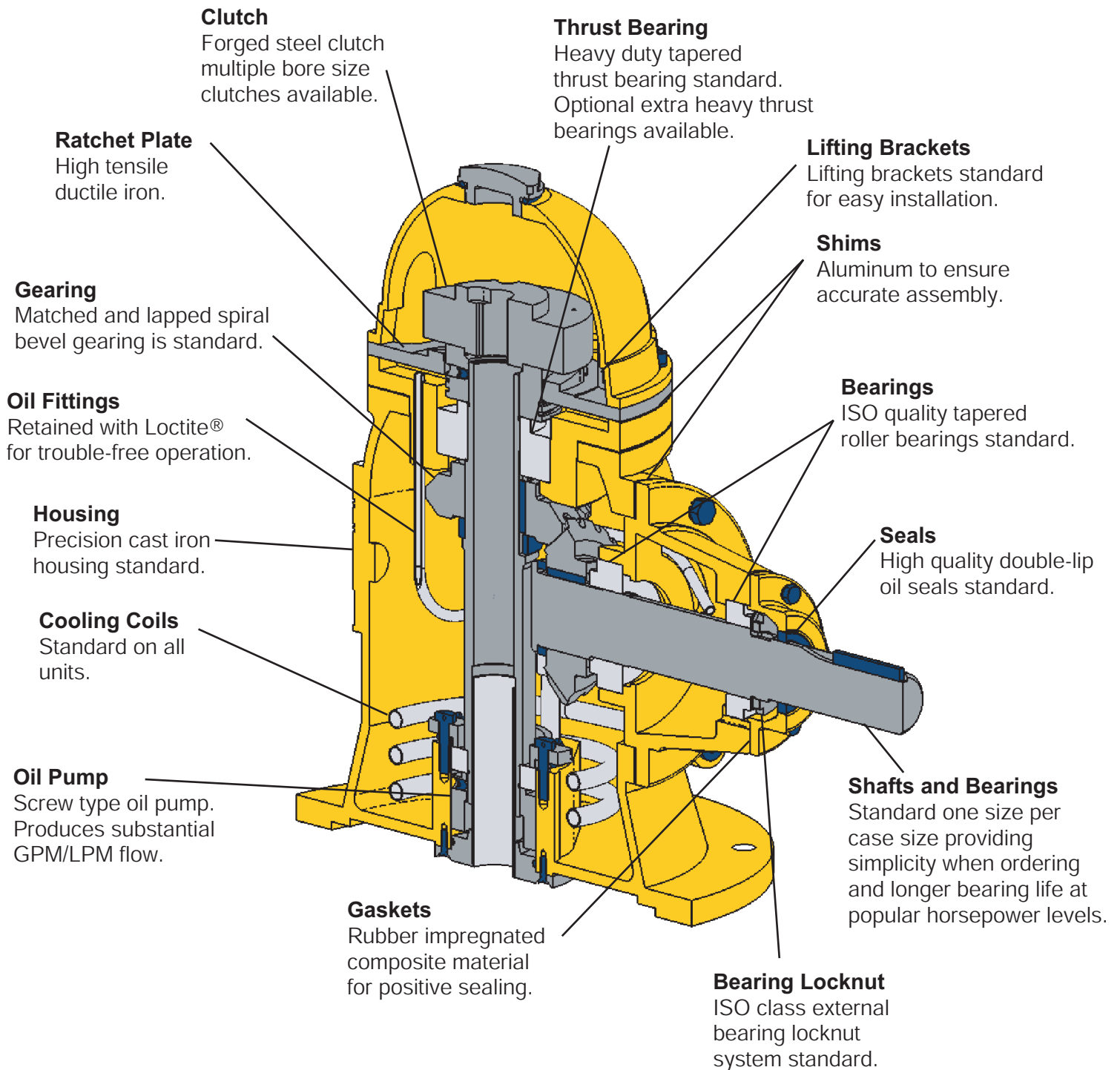
Gear Case	G-30		G-50		G-100	
	in	mm	in	mm	in	mm
AG	21"	533	27"	686	37"	940
AJ	14.750"	375	14.750"	375	18.250"	464
AK	13.501"	343	13.501"	343	13.501"	343
BB	3/8" x 3/16"	10 x 5	5/8" x 5/16"	16 x 3	3/4" x 3/8"	19 x 10
BD	16.500"	419	16.500"	419	20.000"	508
BF	0.688"	17	0.688"	17	0.688"	17
BX max	1"-1/2"	25-13	1"-1/2"	25-13	1"-15/16"	49
BX min	3/4"	19	3/4"	19	1-3/16"	30
C	-	-	-	-	5/8"-11	16-279
CC	1.874"	48	2.249"	57	2.937"	75
CD	17.875"	454	22.625"	575	31.500"	800
G	0.813"	21	0.875"	22	0.875"	22
H	8.500"	216	11.500"	292	13.620"	346
I	17.000"	432	18.000"	457	21.250"	540
J	4.750"	121	5.188"	132	5.875"	149
P	1.250"	32	1.500"	38	2.500"	63
Q	3.125"	79	3.750"	95	4.500"	114
S	4.500"	114	4.625"	117	5.875"	149
V	2.000"	51	2.000"	51	2.500"	63
NET WT	255 lbs	115.67 kg	350 lbs	13.78 kg	750 lbs	29.18 kg
OIL QTS	6		7		13	



BX'		X'		BY'		BZ'	
in	mm	in	mm	in	mm	in	mm
0.750"	19	3/16" x 3/32"	4.7 x 2.4	10"-32"	245-813	1.375"	35
0.875"	22	1/4" x 1/8"	6.3 x 3.2	10"-32"	245-813	1.375"	35
1.000"	25	1/4" x 1/8"	6.3 x 3.2	10"-32"	245-813	1.375"	35
1.063"	27	1/4" x 1/8"	6.3 x 3.2	10"-32"	245-813	1.375"	35
1.188"	30	1/4" x 1/8"	6.3 x 3.2	1/4"-20"	6.3-508	1.750"	44
1.250"	32	1/4" x 1/8"	6.3 x 3.2	1/4"-20"	6.3-508	1.750"	44
1.438"	37	3/8" x 3/16"	9.5 x 4.8	1/4"-20"	6.3-508	2.125"	53
1.500"	38	3/8" x 3/16"	9.5 x 4.8	1/4"-20"	6.3-508	2.125"	53
1.688"	43	3/8" x 3/16"	9.5 x 4.8	1/4"-20"	6.3-508	2.500"	64
1.750"	44	3/8" x 3/16"	9.5 x 4.8	1/4"-20"	6.3-508	2.500"	64
1.938"	49	1/2" x 1/4"	12.7 x 6.4	1/4"-20"	6.3-508	2.500"	64
2.000"	51	1/2" x 1/4"	12.7 x 6.4	1/4"-20"	6.3-508	2.500"	64
2.188"	56	1/2" x 1/4"	12.7 x 6.4	3/8"-16"	9.5-406	3.250"	83

Vertical Shaft RPM	Percent Horsepower @1760 RPM	Percent Thrust Capacity
430	38	160
580	46	145
690	53	137
720	54	135
870	61	126
960	65	122
1160	74	115
1460	89	106
1760	100	100
2000	105	96
2200	111	93

To obtain horsepower and thrust bearing ratings for speeds listed multiply the horsepower and the thrust bearing rating at 1760 rpm by percentage listed above.



OMNI GEAR®



E-mail: Sales@OmniGear.com Web: www.OmniGear.com
©2003 Omni Gear®, All rights reserved